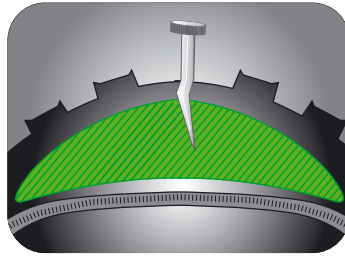


TECHNICAL RECORD

Protect'air

PROTECT'AIR



DESCRIPTION

The Protect'Air range is made up of an extremely hard rubber sub-layer. This reinforcement increases the tire's resistance to punctures by more than 50%.

PROTECT'AIR = EXCELLENT PERFORATING STRENGTH WITHOUT PENALIZING THE BEARING AND THE WEIGHT

ADVANTAGES OF THE HUTCHINSON RANGE / SCHWALBE RANGE (cf summary tables)

- The perforating strength is more important (cf table below)
- Hutchinson Tires are 10% lighter (average trend) : green rubber more thin and more resistant
- Hutchinson Tires prices are very competitive (cf table page 2)
- Better output of the Hutchinson tires

Hutchinson average			Schwalbe average		
Weight (g)	Output (m)	Resist. Perfor. (daN)	Weight (g)	Output (m)	Resist. Perfor. (daN)
640	226	14,67	704	217	13,67

COMPETITORS

Continental Security system :

utilizes an extra-duty, highly elastic casing belt that is virtually impervious to thorns, glass, and other road debris. = **Bad road holding!**

Schwalbe Smartguard: 5mm rubber under casing, and resistance from cuts = **Weight!**

Michelin Protek MAX: protek compound rubber mix with antioxidant elements for better grip and resistance to climatic variations and pollution. Anti-puncture reinforcement under the tread = **« Marketing »: All the rubbers use antioxidants**

NNER TUBES

To use the tubes tire Protect' Air in complement makes it possible to be freed from 99% of the risks of puncture!

- Thanks to the integrated anti-puncture liquid, the perforations are immediately controlled!